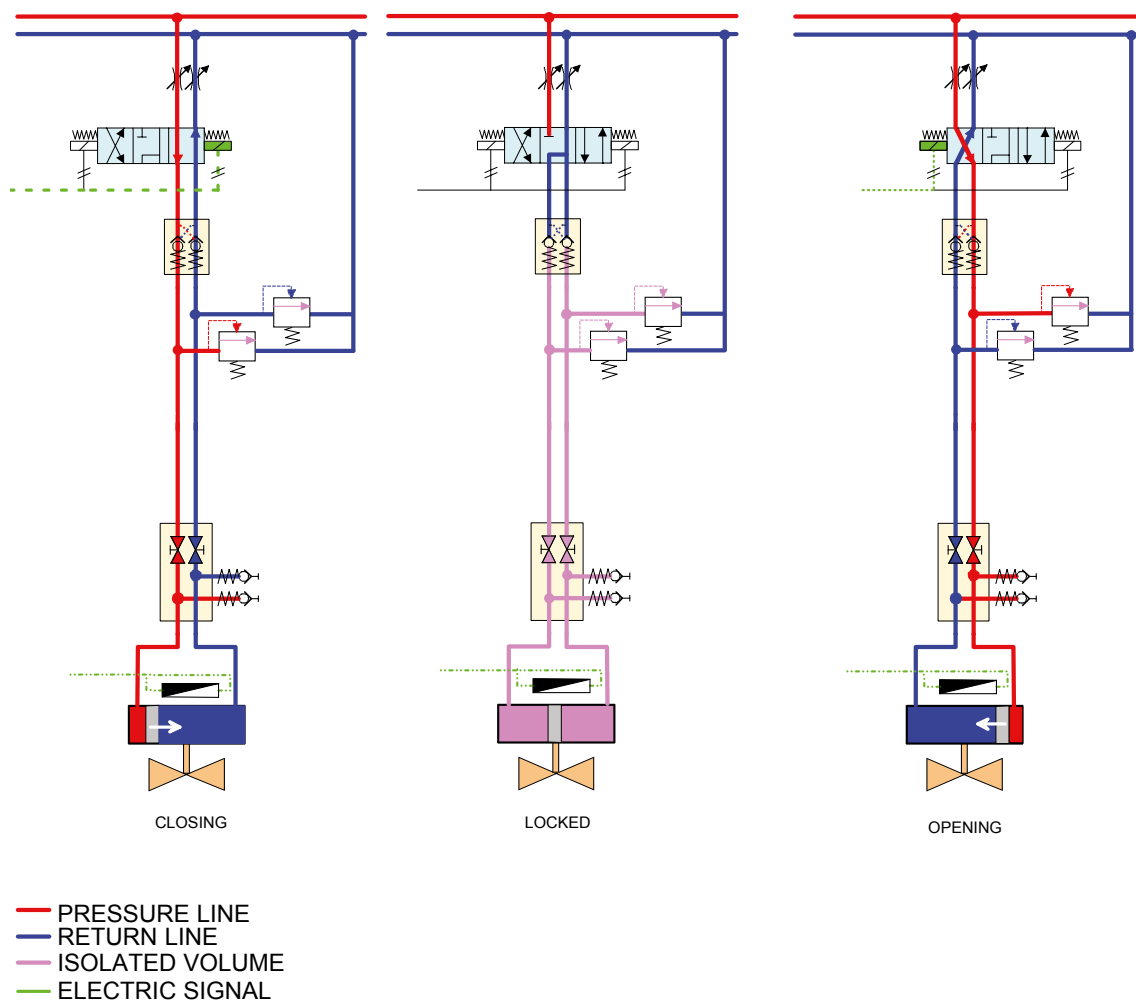


## Control Circuit D33

### DIRECT CONTINUOUS INDICATION



#### Throttle control, fail to set. Direct indication.

Control via spring loaded directional valve, 4/3 type, activated by two solenoids operated by electric signal. Upon release of electric signal to the solenoid, the directional valve returns to center position. A hydro-lock keeps the actuators in its set position.

The built in relief valves prevents accumulation of high pressure in the actuator lines due to temperature changes.

Continuous indication by potentiometer mounted in stainless steel housing, protection grade IP68, mounted directly on the actuator.