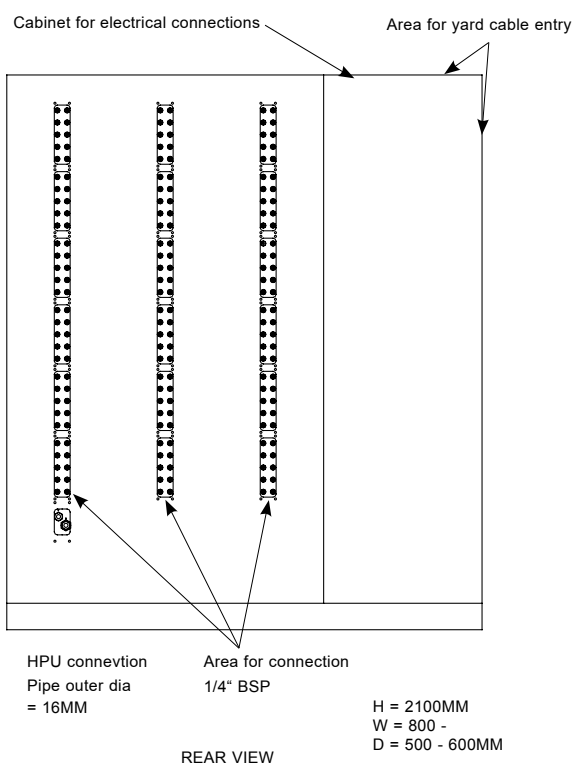
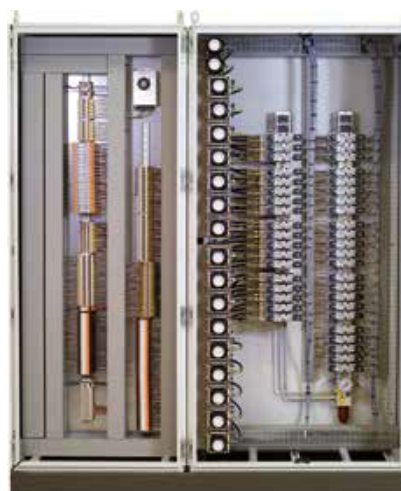


## Solenoid Valve Cabinet

### CABINET WITH DOOR IN FRONT. SEPARATED ELECTRO - HYDRAULIC AND ELECTRIC SECTIONS.

- Wandfluh NG4 solenoid valve
- 24VDC coils
- Solenoid valves mounted on manifold blocks in the rear of the cabinet
- Cable entrance through top or side of cabinet
- Hydraulic connections to actuators through back of cabinet

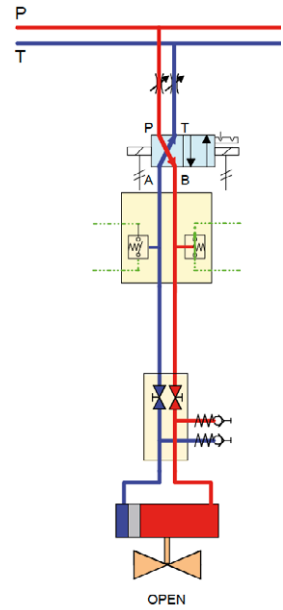
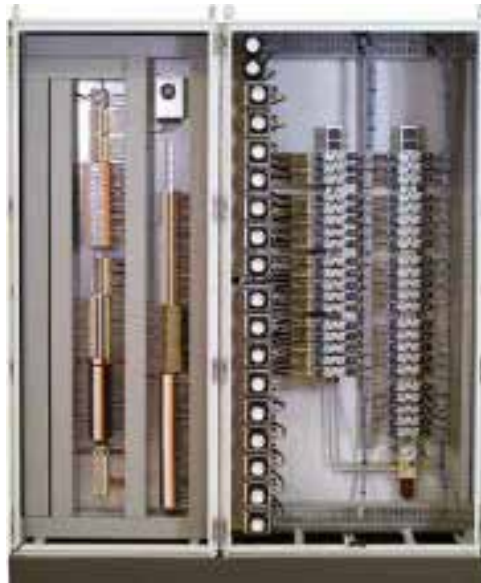


## INDIRECT OPEN/CLOSE INDICATION FLOW SWITCH INDICATOR INSTALLED IN SOLENOID VALVE CABINET

Open/Close indication based on monitoring the flow in the lines to the actuator. Positive feedback on actuator movement by indication of flow in return line. P

No additional cabling to actuator needed.

See datasheet Control Circuit D22 and S22 for details.



## INDIRECT CONTINUOUS INDICATION VOLUMETRIC INDICATOR INSTALLED IN SOLENOID VALVE CABINET

Continuous indication by measuring the oil volume distributed to/from the actuator by using a volumetric indicator. Pressure and temperature independent. No additional cabling needed.

See datasheet Control Circuit D36 for details.

