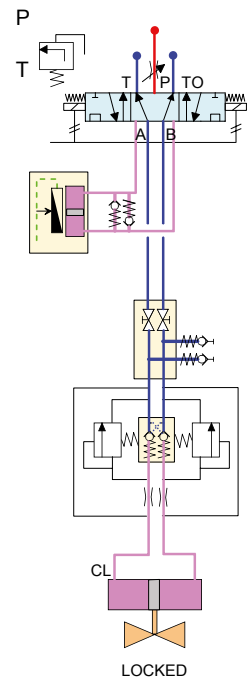


## Valve position indication



### INDIRECT CONTINUOUS INDICATION VOLUMETRIC INDICATOR INSTALLED IN SOLENOID VALVE CABINET

Continuous indication by measuring the oil volume distributed to/from the actuator by using a volumetric indicator.  
Pressure and temperature independent.  
No additional cabling needed.

See datasheet Control Circuit D36 for details.