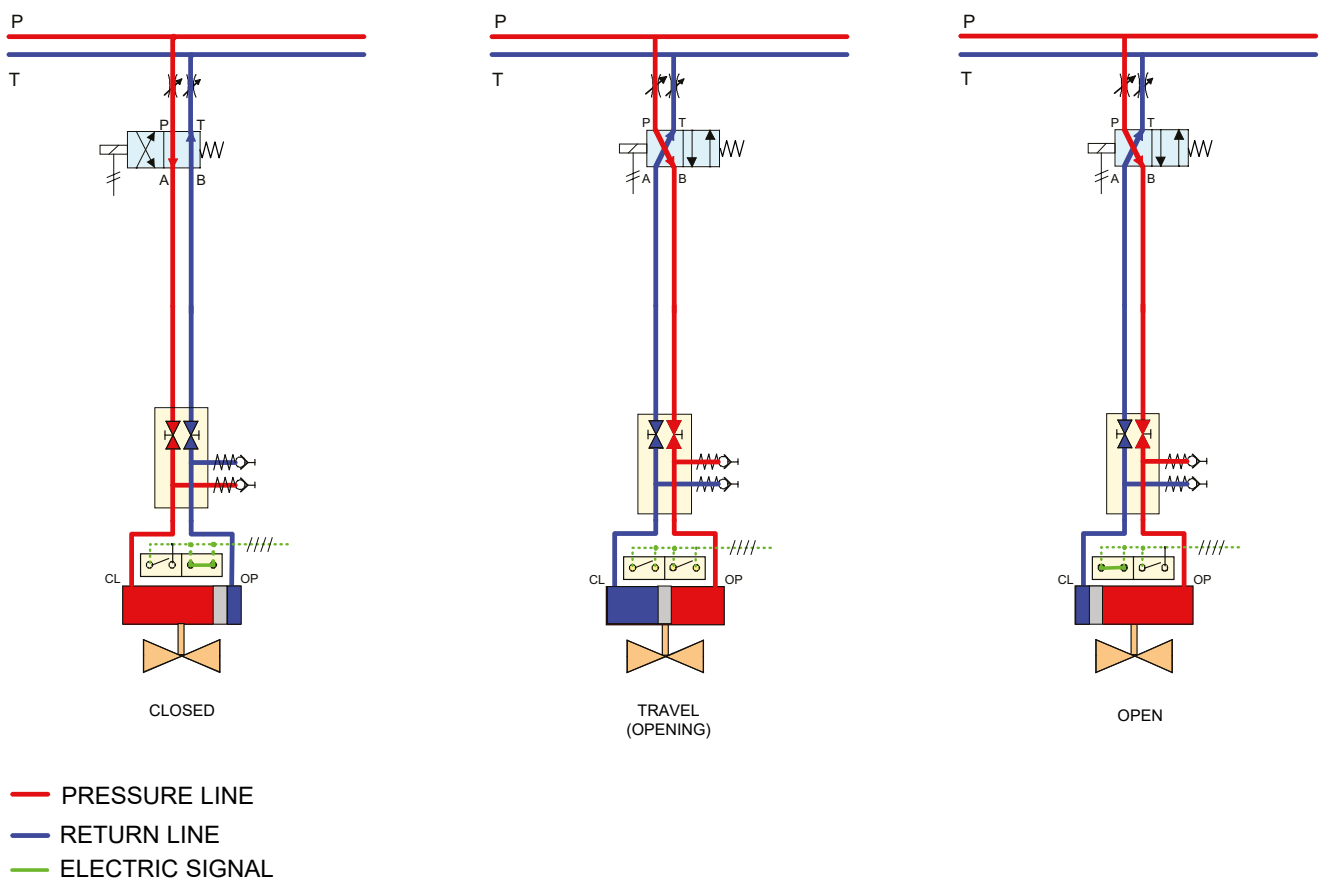


## Control Circuit D21 SRA

### DIRECT INDICATION OPEN/CLOSE (WITH SPRING RETURN)



#### Open/Close control, fail to close. Direct indication.

Control via spring loaded directional valve, 4/2 type, activated by one solenoid operated by electric signal.

Open/Close indication by two micro switches mounted in stainless steel housing, protection grade IP68, mounted directly on the actuator.