

## Hydraulic actuator - single acting

### SINGLE ACTING

Type: 1/4 turn hydraulic actuator  
RE2 - Spring-to-close action  
RF2 - Spring-to-open action

- Scotch-yoke design, piston type
- Adjustable stroke
- Local visual position indicator
- Stationary hand pump or quick connectors for portable
- Connection flange according to ISO 5211

Available torque up to 17800 Nm (Larger actuators on request)

Service temperature -45°C to +120°C

Use area: For dry and submerged purpose (for submerged type "SBM" a seal connection kit is added).



### MATERIAL

#### PART NAME

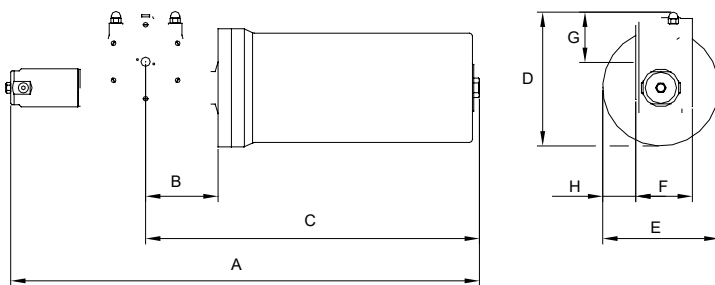
#### MATERIAL

CENTRAL BODY, DRIVE FORK	NODULAR CAST IRON
CYLINDER	NODULAR CAST IRON/ CARBON STEEL
SPRING HOUSE	NODULAR CAST IRON/ CARBON STEEL
HELICOIL SPRING	SPRING WIRE
TOP COVER	CARBON STEEL
PISTON ROD	CHROME PLATED CARBON STEEL
CROSS PIN	TEMPERED STEEL
END ADJUSTMENT SCREW, CAP NUT	STAINLESS STEEL
PISTON SEALINGS	POLYURETHANE
O-RINGS	NITRILE
SCREWS, NUTS AND WASHERS	STAINLESS STEEL

## OUTPUT TORQUE

ACTUATOR TYPE NO.	OUTPUT TORQUE (NM)					
	AT 100 BAR		AT 130 BAR		AT 180 BAR	
RE2 - SPRING-TO-CLOSE	RX2.. H5 5 B		RX2.. H7 1 B		RX2.. H5 1 B	
RF2 - SPRING-TO-OPEN	BREAK	SPRING END	BREAK	SPRING END	BREAK	SPRING END
RX2 05 H.. B	69	69	153	105	143	105
RX2 07 H.. B	163	131	287	224	305	224
RX2 10 H.. B	315	275	712	391	669	391
RX2 12 H.. B	572	538	1173	903	1094	903
RX2 14 H.. B	1154	1052	2253	1810	2160	1810
RX2 16 H5 5 B	2833	1848				
RX2 16 H.. B	3794	3600	4184	3600	4913	3600
RX2 25 H.. B	6856	7329	8269	7329	8997	7329
RX2 30 H.. B	15582	14514	17809	14514	16572	14514

## DIMENSIONS



ACTUATOR TYPE	DIMENSIONS (MM)								WEIGHT (KG)
	A	B	C	D	E	F	G	H	
y = 7: for 13 Mpa y = 5: for 18 Mpa									
Rx2 05 Hy 1 B	500	98	334	170	146	94	73	33	14
Rx2 07 Hy 1 B	552	109	354	188	149	104	82	30	21
Rx2 10 Hy 1 B	740	122	518	223	162	114	102	42	42
Rx2 12 Hy 1 B	900	138	649	263	220	124	105	55	65
Rx2 14 Hy 1 B	1104	163	791	323	275	134	125	78	120
Rx2 16 Hy 1 B	1325	180	925	454	366	209	159	88	300
Rx2 25 Hy 1 B	2206	205	1714	490	366	244	174	68	410
Rx2 30 Hy 1 B	2383	255	1762	543	416	304	215	63	670