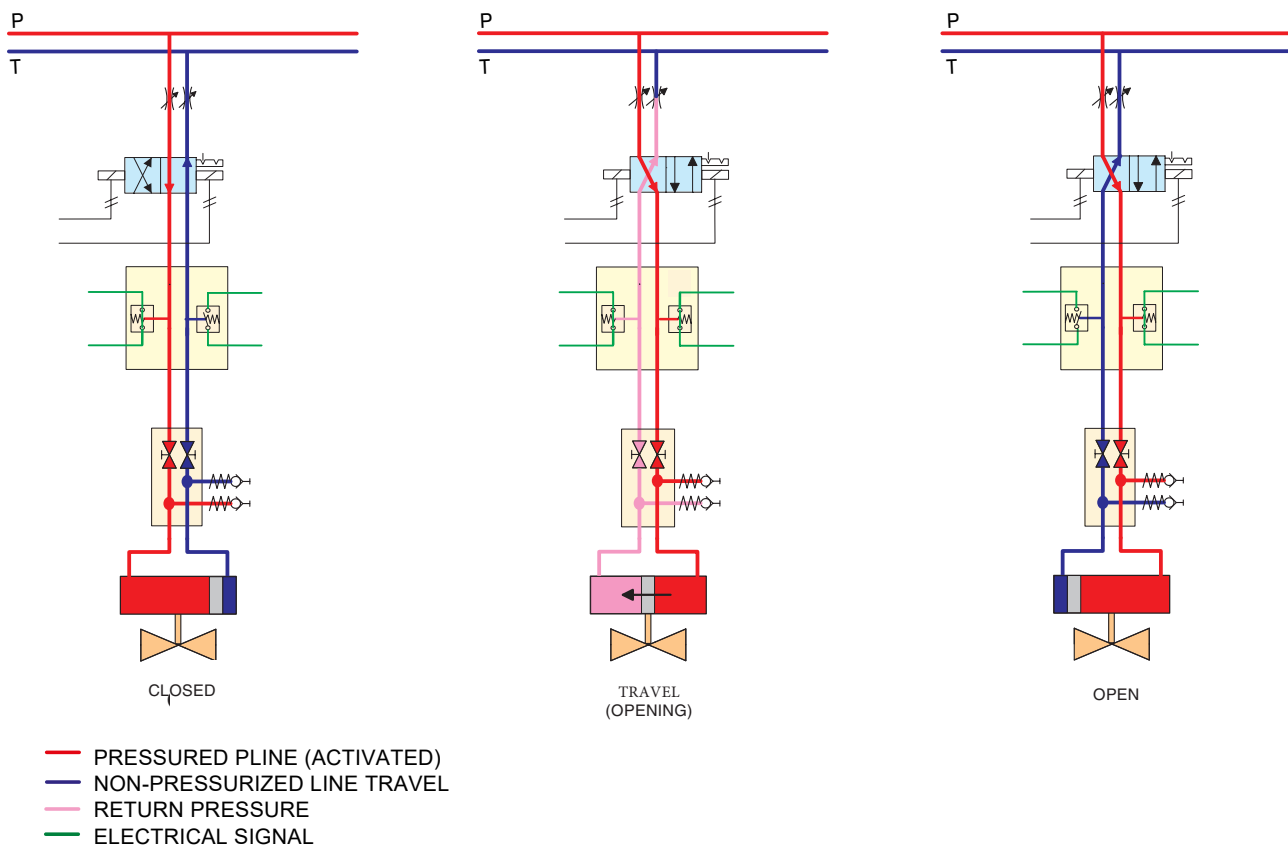


Control Circuit D22

INDIRECT INDICATION OPEN/CLOSE



Open/Close control, fail to set. Indirect indication

Control via bistable directional valve, 4/2 type, activated by two solenoids operated by electric signals.

Open/Close position indication by flow/pressure switches in both "A" and "B" lines.

The pressure switches are activated at a pressure of less than 10 bar, and due to the throttle valve in the T-line, return flow in "A" or "B" line is indicated even at low pressure.

Activated pressure switch in "A" line only indicates actuator in "CLOSE" position, and activated pressure switch in "B" line indicates "OPEN" position.

Both pressure switches activated indicates "ACTUATOR MOVING".

This indication circuit gives a positive feedback on actuator movement by indicating flow in the return line from the actuator.